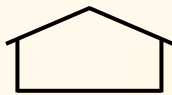




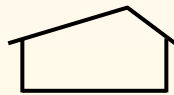
## Horse Barn Design Guide by Kaiser Construction

### Horse Barn: Roof Framing Styles:

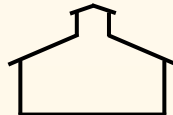
Gable Symmetrical Barn Roof



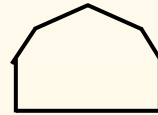
Offset Gable Barn Roof



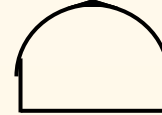
Clerestory Barn Roof



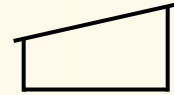
Gambrel Barn Roof



Gothic Barn Roof

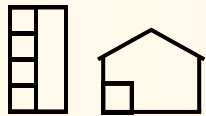


Single Slope Barn Roof

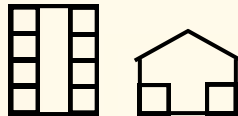


### Horse Stall Layouts and Configurations:

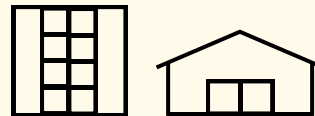
Single Horse Stall Row



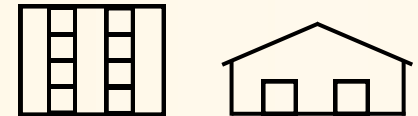
Center Aisle Between Horse Stalls



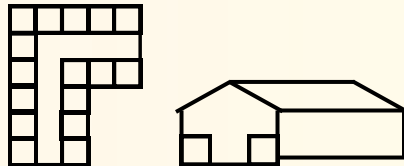
Island Horse Stall Configuration



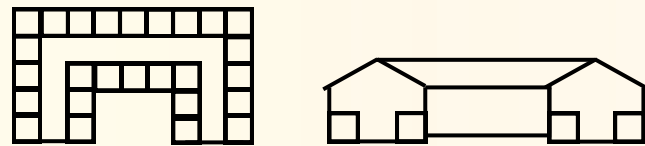
Island Horse Stall Configuration With Center Aisle



"L" Shaped Horse Stall Layout

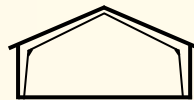


"U" Shaped Horse Stall Layout

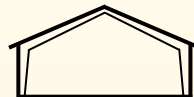


### Horse Barn Construction Types

Laminated Wood Arch Horse Barn Construction



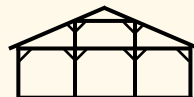
Pre-Engineered Steel Horse Barn Construction



Post and Frame Horse Barn Construction

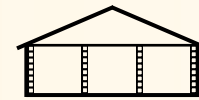


Mortise and Tenon Horse Barn Construction



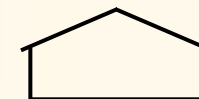
### Construction Types

Masonry Horse Barn Construction



### Column Configurations:

Clear Span Horse Barn Construction



Internal Column Horse Barn Construction



We can "Build Your Ideas" in a variety of construction types, styles, and configurations.  
Contact Kaiser Construction for more information and a free estimate at [www.kaiserbuilds.com](http://www.kaiserbuilds.com)



**Kaiser**  
Construction  
Company inc.

"Building Your Ideas"

Design | Build Equestrian Construction  
P 717-336-0211    www.kaiserbuilds.com

EQUESTRIAN FACILITY DESIGN | CUSTOM HORSE BARNs | INDOOR RIDING ARENAS | ACCESSORY BUILDINGS

Horse Barn Options and Upgrades:

- Horse Barn Aisle dimensions (W x H)
- Horse stall sizes (L x W)
- Hay loft above horse stalls
- Horse Barn ceiling height
- Horse Stalls: European or domestic, wood or metal
- Horse Barn windows and doors
- Horse Stall windows and Dutch doors
- Lighting fixtures and quantity
- Translucent panels, skylights, skybands
- Horse Barn ventilation requirements
- Exterior: roofing, siding, concrete, walkways
- Interior: ceiling, walls, flooring
- Horse Barn mechanicals and utilities
- Accessories: feed, water, posts, rings
- Horse barn Business office(s)
- Horse Tack and saddle room(s)
- Horse Wash stall(s) with hot water
- Arena viewing area(s)
- Rider lounge(s)
- Bathroom(s)
- Horse treadmills
- Equipment storage bays
- Run-in sheds | Loose boxes
- Hot walkers
- Circular arenas
- Barn and driveway gates
- Horse paddocks
- Outdoor arena and pasture fencing



see more at [kaiserbuilds.com](http://kaiserbuilds.com)

Call Kaiser Construction for all of your Equestrian Facility Design / Build needs!